

# House and Land Package

## Maiden Gully

### Columbia 21 - Province Facade



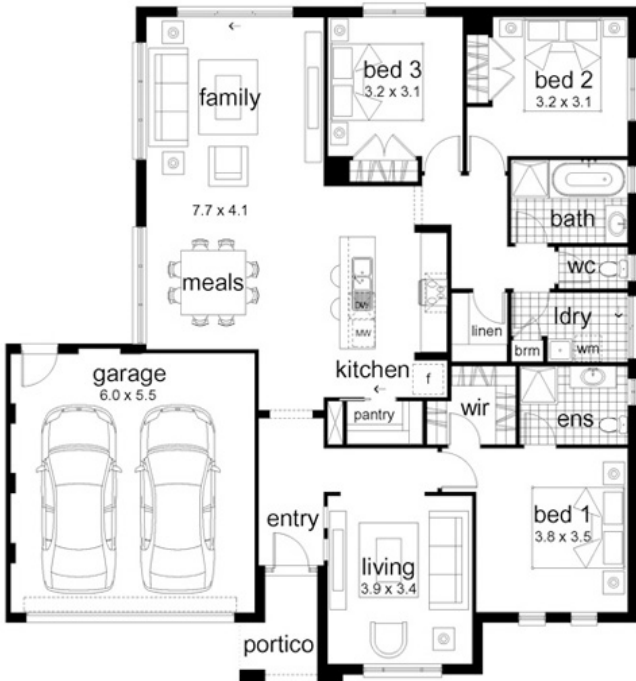
#### Columbia 21

Address: 11, Browns Way, Maiden Gully, 3551

Land Size: 714 m2 Home size: 20.3 sq (188.9 m2)

#### Package includes:

- ✓ House
- ✓ Connections
- ✓ Automatic Garage Door with Handheld Remotes
- ✓ Technika 900mm Canopy Rangehood
- ✓ Flyscreens
- ✓ Concrete Driveway & Path (50m2)
- ✓ Technika 600mm Gas Cooktop
- ✓ Gas Ducted Heating
- ✓ Land
- ✓ 2250 Litre Water Storage Tank
- ✓ Letterbox
- ✓ Carpet & Tiles
- ✓ Technika 600mm Electric Fan Forced Oven
- ✓ TV Antenna
- ✓ Deluxe Clothesline
- ✓ Technika Stainless Steel Dishwasher



## Aspirations House and Land Package

# \$261,471\*

Free Call 1800 DENNIS ^ or visit [www.dennisfamily.com.au](http://www.dennisfamily.com.au)

\*Home is not built yet. All illustrations and descriptions have been prepared in good faith and with due care. Facades and images are representative only and to be used as a guide. Alterations and price changes may occur without notice after the date of printing. Site costs are not fixed unless specified. Fixed site costs refers to site fall, connection costs and rock removal only. Dennis Family Homes reserves its right to alter designs, inclusions and options without notice. Package offered is subject to land availability which may change at any time without notice, and is not available in conjunction with any other promotional offer.

^ Free call number not applicable to mobile phones. Dennis Family Homes Pty Ltd ABN: 83 056 254 249 © Dennis Family Homes 2008.

